

# SPECTRUM Series Special Application Manual Alarm Stations



## Description

The SPECTRUM Series is a family of die-cast, metal pull stations designed to meet special application requirements such as: weather alert, hazmat spills, police call, medical emergencies, door release and fire suppression. There is a series of special application labels to designate the function of the pull station for the user. There is no agency standard, outside of red for fire that dictates what color is to be used for a specific application.

This series of pull stations is available in single or dual action configurations. There are two sets of gold plated contacts that can be configured by the installer as either normally open or normally closed. The terminal block accommodates field wiring of #22 to #14 AWG. All models have been tested by UL and found in compliance with the pull force requirements of the Americans with Disabilities Act (ADA). The Spectrum stations are key resettable.

## Operation

The stations are operated by pulling the handle marked "PULL" on the front of the unit as far down as it will go. At that point, the handle will lock in place and is easily visible from up to 50 feet. The activation handle is reset by opening the station with the key, placing the "PULL" handle to its normal upright position and relocking the station. On the dual action, the "PUSH" or optional "EMERGENCY" bar moves inward allowing the "PULL" handle to be operated by a single hand.

## Mounting Configurations

**Semi-Flush**--All models mount on a standard single-gang back-box.

**Surface Mount Interior**--Use SigCom SGB-32S

**Surface Mount Exterior**-- Use SigCom die cast weatherproof back-box #SG-WP series. Includes gasket set, final assembly achieves NEMA 3R rating.

- **Single or Dual Action**
- **Special Application Labeling Available**
- **Screw Terminal Connections**
- **Normally Open or Closed Alarm/Auxiliary Contacts**
- **Gold Plated Contacts**
- **Surface or Weatherproof Back-box**
- **Consult factory for other colors**



## Signal Communications Corporation

4 Wheeling Avenue • Woburn, MA 01801 USA  
Tel +1-781-933-0998 • Fax +1-781-933-5019

[www.sigcom.com](http://www.sigcom.com)

# SIGCOM SG-42 SPECTRUM Series Manual Pull Stations

## SPECIFICATIONS

Listings:	UL, ULC, FM, CSFM, MEA
Temperature:	-40 <sup>o</sup> to 150 <sup>o</sup> F; 40 <sup>o</sup> to 65 <sup>o</sup> C, 90% relative humidity @ 100 <sup>o</sup> F; 38 <sup>o</sup> C
Switch Rating:	2 Amps @ 125 VDC, 2 Amps @ 240 VAC,
Screw Terminal Block	#22 to #14 gauge wire
Pull Station Weight:	1.2 lbs., 0.55 kg
Pull Station Dimensions:	4.75”h x 3.25”w x 1.1”d; 12.1 x 8.3 x 2.8 cm
Surface-Mount Backbox Dims:	Outside: 4.75”h x 3.25 ”w x 2.25”d; 12.1 x 8.3 x 5.7 cm Inside Depth: 2.12”; 5.4 cm
Lock:	CAT30 aka “B” key lock is standard (others available, consult factory)
Break-Rod:	Optional, not required for operation. One break-rod is included with each pull station

## ORDERING INFORMATION

### Spectrum Color Pull Stations

- SG-42CXX1-BL Dual Action Pull Station, DPDT, Blue
- SG-42CXX1-GR Dual Action Pull Station, DPDT, Green
- SG-42CXX1-YL Dual Action Pull Station, DPDT, Yellow
- SG-42CXX2-BL Single Action Pull Station, DPDT, Blue
- SG-42CXX2-GR Single Action Pull Station, DPDT, Green
- SG-42CXX2-YL Single Action Pull Station, DPDT, Yellow



- SG-42CXX1E-BL Dual Action Pull Station, with Emergency Push Bar, DPDT, Blue
- SG-42CXX1E-GR Dual Action Pull Station, with Emergency Push Bar DPDT, Green
- SG-42CXX1E-YL Dual Action Pull Station, with Emergency Push Bar DPDT, Yellow

### Spectrum Pull Station Back-Boxes

**Sheet Metal Back-Box**, Indoor Use, two - 1/2" knockouts,

For BLUE order SGB-32S-BL; For YELLOW order SGB-32S-YL, for GREEN order SGB-32S-GR

**Weather Proof Back-Box**, Outdoor Use, NEMA 3R, with gasket, one tapped hole 3/4" NPT

For BLUE order SG-WP-BL; For Yellow order SG-WP-YL, for GREEN SG-WP-GR

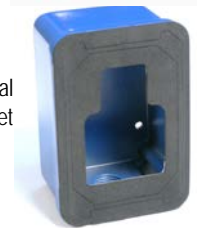
Sheet Metal Back-Box



### Accessories for Pull Station

- SG-GR01 Replacement Break-Rods (12 per package)  
Notes: • One (1) break-rod is included with each pull station;  
• Break-rod is optional, it is not required for operation
- SG-LOCK-\* Alternate lock set (\* Consult Factory for options), CAT15, CAT45, CAT60, Hex,

Weather- Proof Cast Metal Back-Box Shown with Gasket



### Also:

- Red Fire Alarm Pull Stations - See Sigcom SG-42 Series Data Sheet
- New York City MEA Listed Stations – See Sigcom NYC Stations, SG-42NY Series Data Sheet
- Marine Rated and Explosion Proof Pull Stations – See Sigcom SGX Series Data Sheet



Signal Communications Corporation  
4 Wheeling Ave, Woburn MA 01801 USA  
+1-781-933-0998 • [www.sigcom.com](http://www.sigcom.com)

## Labels for SigCom SPECTRUM Pull Stations

Please select one (1) top label and one (1) bottom label per pull station.

### Labels for Top Section

Part #	Label Color	Text Color	Text
880-0046-B	Blue	White	ALARM   ALARM
880-0047-B	Blue	White	ALERT   ALERT
880-0050-B	Blue	White	OPEN   DOOR
880-0050-C/R	Clear	Red	OPEN   DOOR
880-0050-C/W	Clear	White	OPEN   DOOR
880-0046-G	Green	White	ALARM   ALARM
880-0047-G	Green	White	ALERT   ALERT
880-0046-Y	Yellow	Red	ALARM   ALARM
880-0047-Y	Yellow	Red	ALERT   ALERT
880-0048-Y	Yellow	Red	LOCAL   EVAC
880-0050-Y	Yellow	Red	OPEN   DOOR

### Examples



#880-0047-G and  
#880-0055-G

### Labels for Lower Section

Part #	Label Color	Text Color	Text
880-0056-B	Blue	White	MEDICAL
880-0057-B	Blue	White	TORNADO
880-0058-B	Blue	White	DOOR RELEASE
880-0062-B	Blue	White	POLICE
880-0090-C/R	Clear	Red	EMERGENCY EXIT
880-0090-C/W	Clear	White	EMERGENCY EXIT
880-0055-G	Green	White	EMERGENCY
880-0056-G	Green	White	MEDICAL
880-0052-Y	Yellow	Red	HAZMAT
880-0053-Y	Yellow	Red	AFFF RELEASE
880-0054-Y	Yellow	Red	EVACUATE
880-0055-Y	Yellow	Red	EMERGENCY
880-0056-Y	Yellow	Red	MEDICAL
880-0057-Y	Yellow	Red	TORNADO
880-0058-Y	Yellow	Red	DOOR RELEASE
880-0199	Yellow	Red	FOAM
<b>Multiple Label Set</b>			
880-0101	Yellow	Red	MANUAL RELEASE SUPPRESSION RELEASE EXTINGUISHER RELEASE SPRINKLER RELEASE



#880-0046-Y and  
#880-0052-Y



#880-0047-B and  
#880-0057-B

Other Labels Available, Including Private Branding. Contact SigCom for Details



Signal Communications Corporation  
4 Wheeling Ave, Woburn MA 01801 USA  
+1-781-933-0998 • [www.sigcom.com](http://www.sigcom.com)

Spectrum Series Data Sheet 022221a